

OH-SHEET



PAPER TOYS

PRESENTS

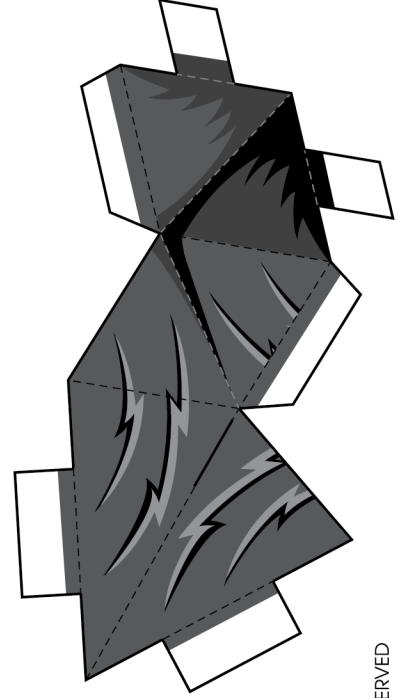
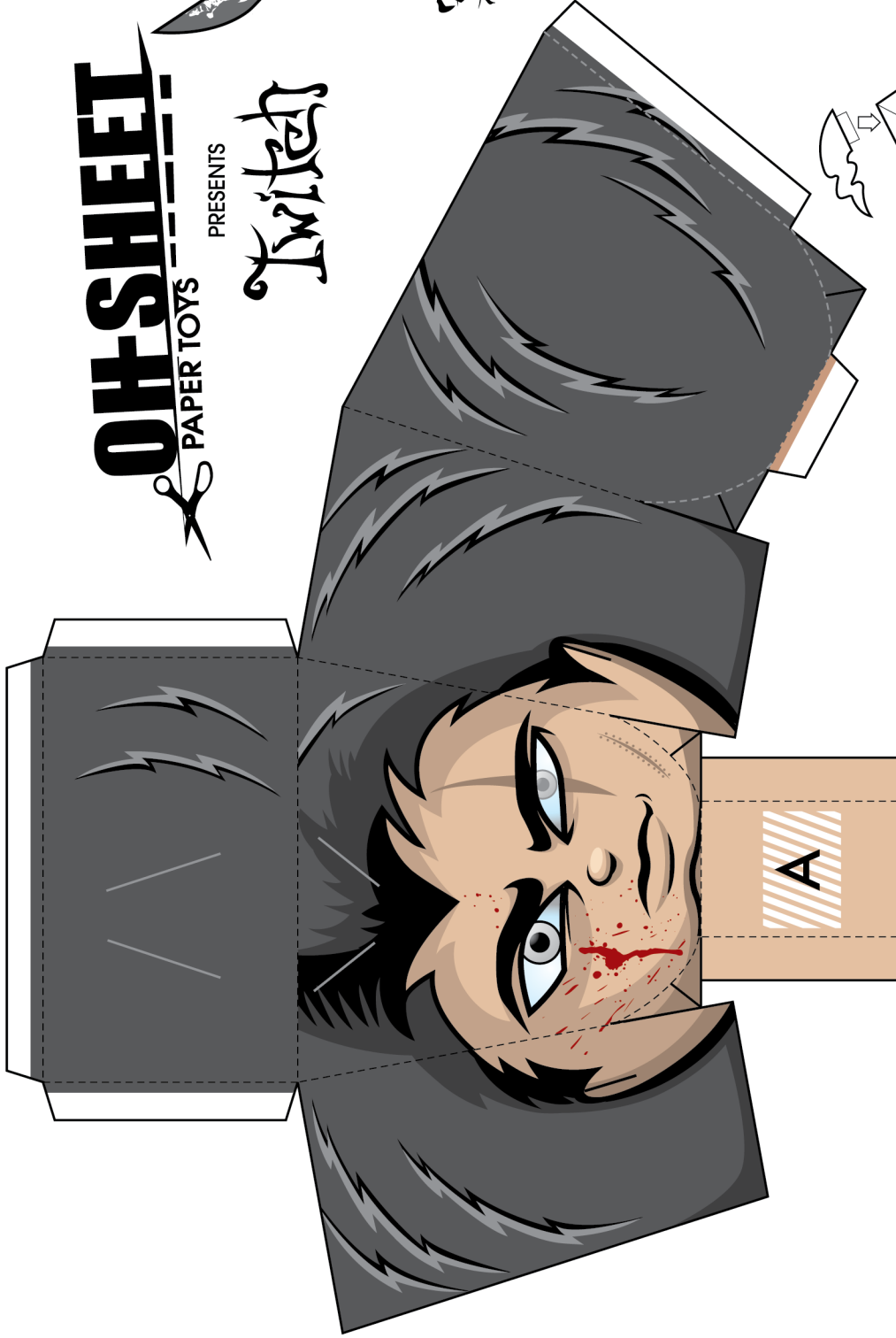
Twisted



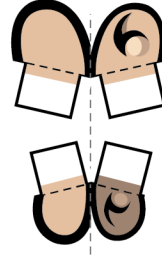
SLASHERS

HALLOWEEN

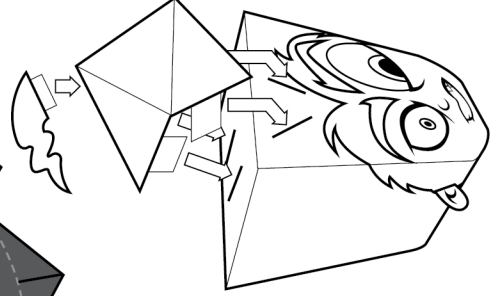
EDITION



Fold and glue before cutting.
Then attach to hair piece.

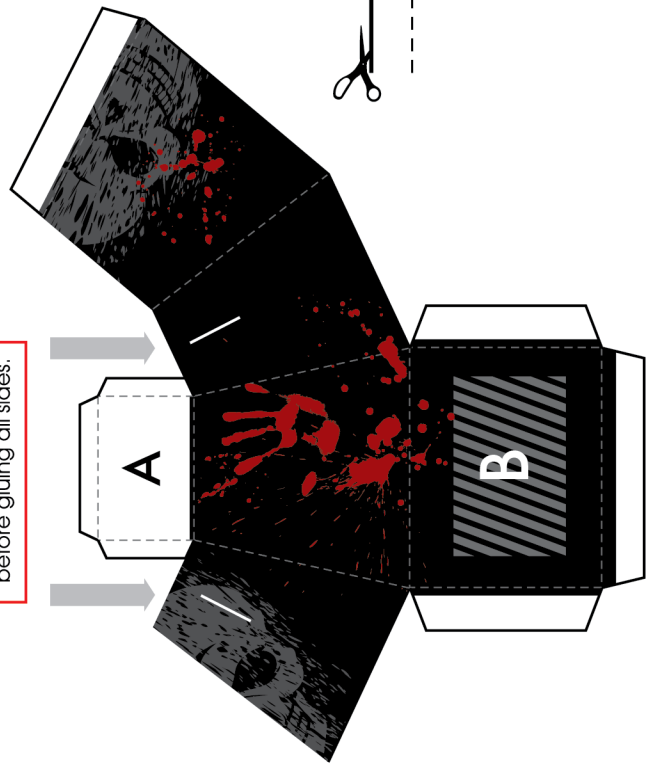


Fold and glue before cutting.

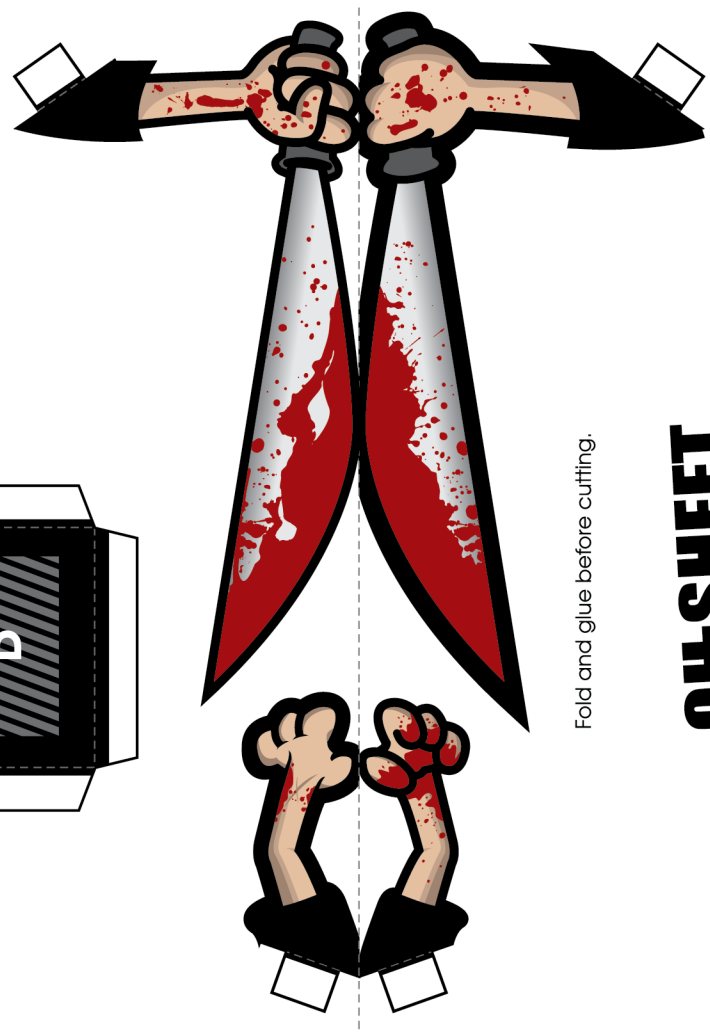


★ Attach hair piece and ears before gluing all sides of the head.

★ Attach arms to body before gluing all sides.



CUT
FOLD



Fold and glue before cutting.

OH-SHEET!
PAPER TOYS

© 2008 OH-SHEET PAPER TOYS. ALL RIGHTS RESERVED

